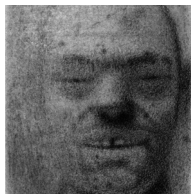




## ANTHONY PALOCCI JR

Anthony Palocci Jr was born in Salem, MA in 1987. He has exhibited in New York City, Seattle, Boston and the Greater Boston area. His work was included in the 2013 deCordova Biennial at the deCordova Sculpture Park and Museum in Lincoln, MA. He has a BFA from Montserrat College of Art in Beverly, MA and a MFA from Pratt Institute in Brooklyn, NY.



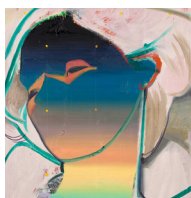
## CRAIG HOOD

Craig Hood lives and works in Portsmouth, NH. He has taught painting and drawing at the University of New Hampshire since 1981. He has participated in group exhibitions at the Bowery Gallery, the First Street Gallery, The National Academy of Design, and the New York Studio School. Craig is represented by Beaux-arts des Ameriques, Montreal, QC.



## DARA ENGLER

Dara Engler received her BFA in painting from the University of New Hampshire and her MFA from Indiana University, Bloomington. She was awarded a Joan Mitchell Foundation MFA Grant in 2007, followed by a recipient group show at the Cue Art Foundation in New York, NY. She teaches painting and drawing at Ithaca College.



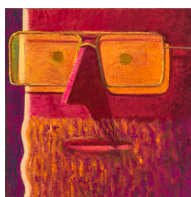
## EMIL ROBINSON

Emily Robinson is an artist known for his dream-like figurative imagery. He is currently an Assistant Professor at the University of Cincinnati. Robinson received his MFA degree from the University of Cincinnati in 2006. In 2007 he received a grant from the Elizabeth Greenshields Foundation, that allowed him to spend six months painting in London. Recent shows include a solo exhibition at Waterhouse and Dodd Contemporary in London.



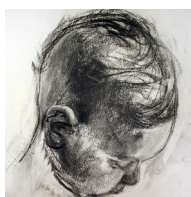
## JOSH JEFFERSON

Josh Jefferson has been the focus of numerous articles, including a full feature in the April 2016 issue of Juxtapoz. Recent exhibitions include one-man shows at Gallery 16 in San Francisco and TURN Gallery in New York City, as well as group exhibitions at Zevitas Marcus in Los Angeles and Zieher Smith in New York City. Jefferson's solo exhibition, Shaboopie, is currently on view at Steven Zevitas Gallery in Boston.



## NAT MEADE

Nat Meade's paintings depict subject matter that varies from the elevated or beatific, to the buffoonish or absurd and often explores male archetypes. Meade received his MFA from Pratt Institute, his BFA from University of Oregon, and attended the Skowhegan School of Painting and Sculpture. He is a 2016-17 recipient of the Sharpe-Walentas studio grant.



## SUZANNE SCHIRESON

Suzanne Schireson's work includes painting, drawing, and video. Recent exhibitions include "Ears May Talk Behind Your Back" a 2015 solo exhibition at Smith College, and "Green Earth" at The Srimanta Sankaradeva Kalakshetra, Panjabari, Guwahati, Assam, India. Schireson holds an MFA from Indiana University, a BFA from the University of Pennsylvania, and is an Assistant Professor of Painting at The University of Massachusetts Dartmouth.

# A HEADS UP GAME

OCTOBER 7 - NOVEMBER 4, 2016

October 14 | **Portrait Drawing Workshop with Emil Robinson**  
*Architectural Grace: An Approach to Likeness*, 1-3pm  
To register, email [kmhapner@taylor.edu](mailto:kmhapner@taylor.edu)

October 14 | **Opening Reception**  
Lecture by Emil Robinson, Metcalf Gallery, 6pm

Taylor University  
Modelle Metcalf Visual Arts Center  
Metcalf Gallery  
236 W Reade Avenue, Upland, IN 46989  
[metcalfgallery.taylor.edu](http://metcalfgallery.taylor.edu)

Gallery hours: Monday - Friday, 8am - 5pm

ANTHONY PALOCCI JR  
CRAIG HOOD  
DARA ENGLER  
EMIL ROBINSON  
JOSH JEFFERSON  
NAT MEADE  
SUZANNE SCHIRESON

# A HEADS UP GAME

OCTOBER 7 - NOVEMBER 4, 2016